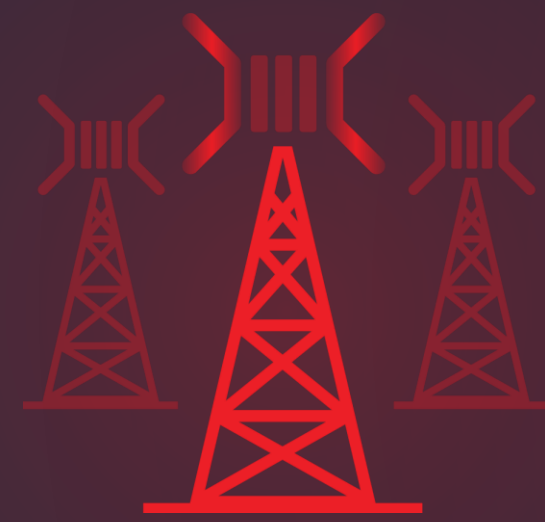


# Adaptable Intelligence: From RF to the Core

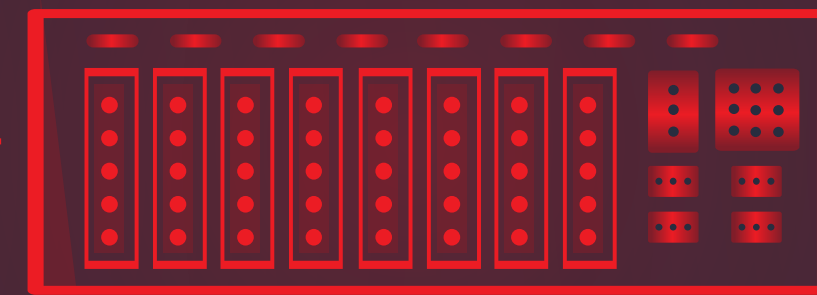


# Xilinx Disruptive Technology in 5G

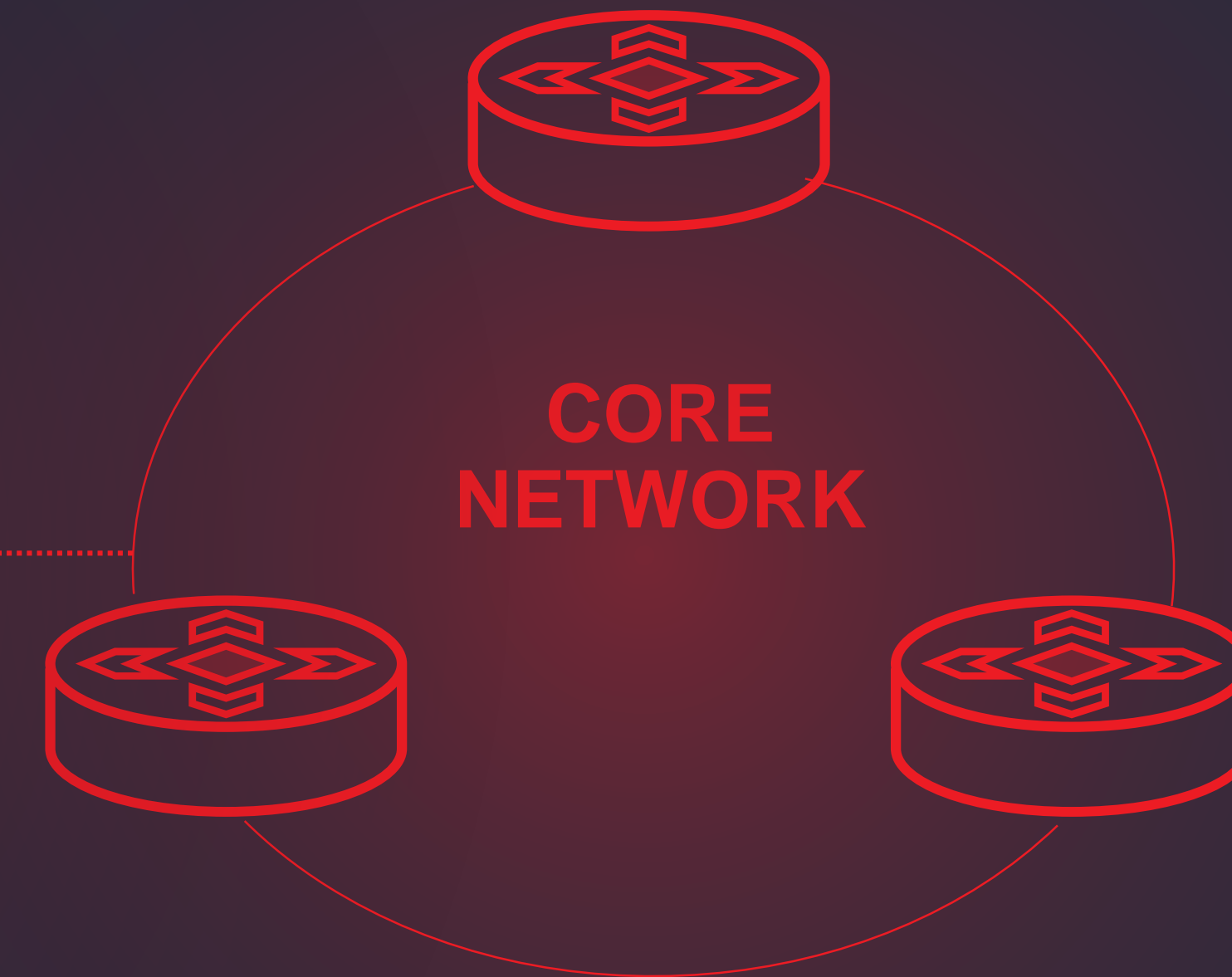
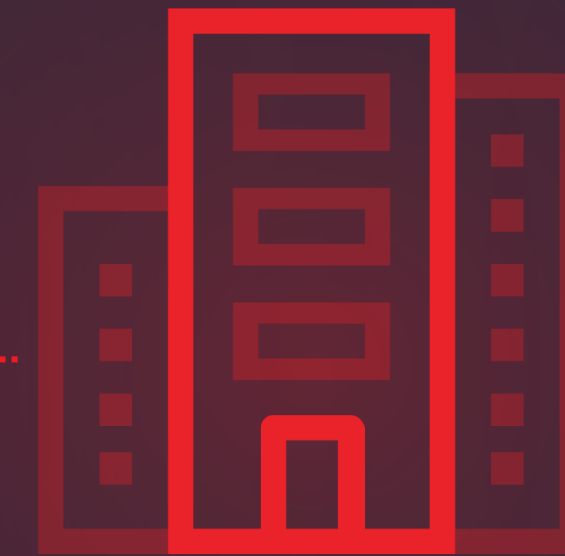
Massive-MIMO  
Radio



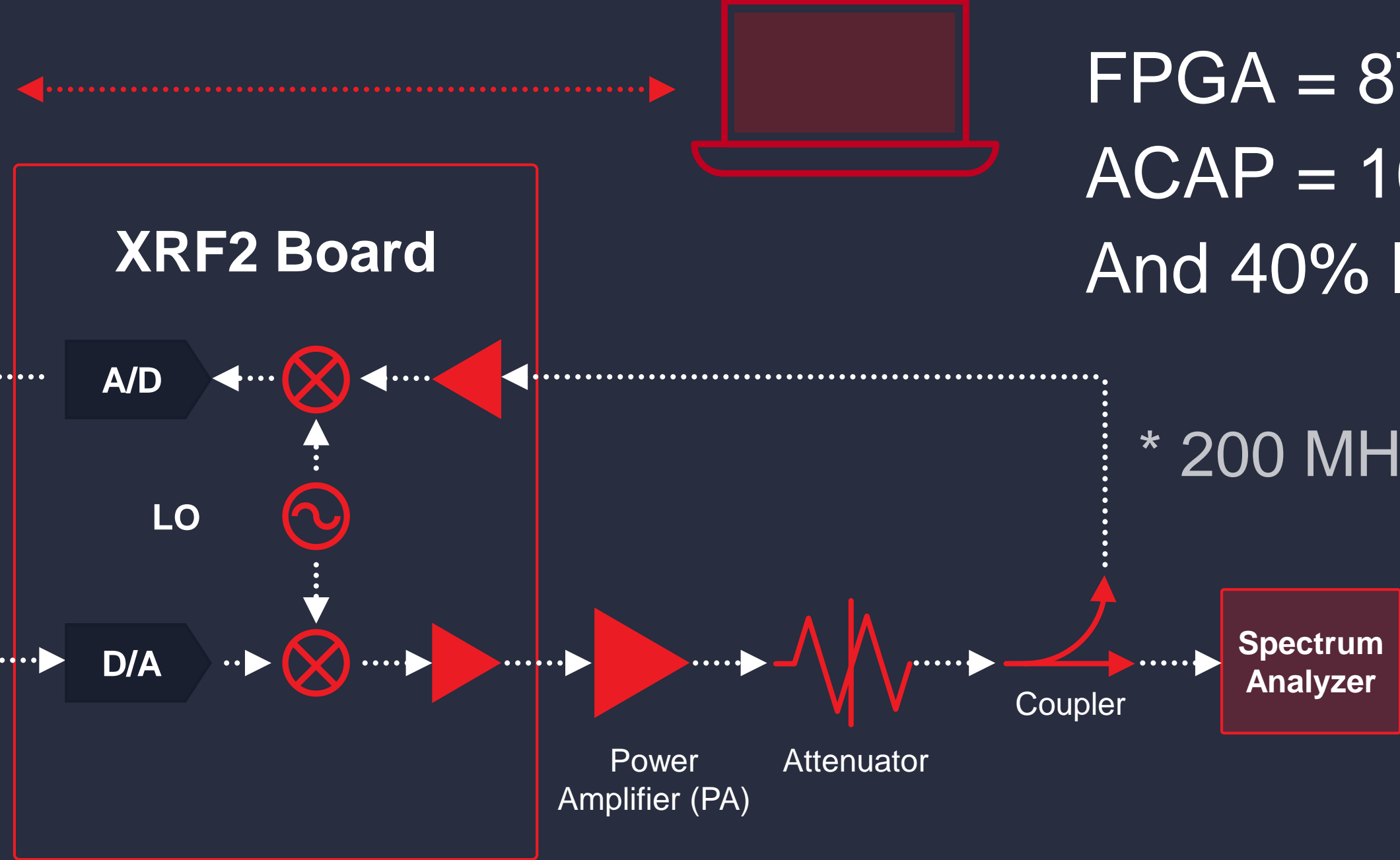
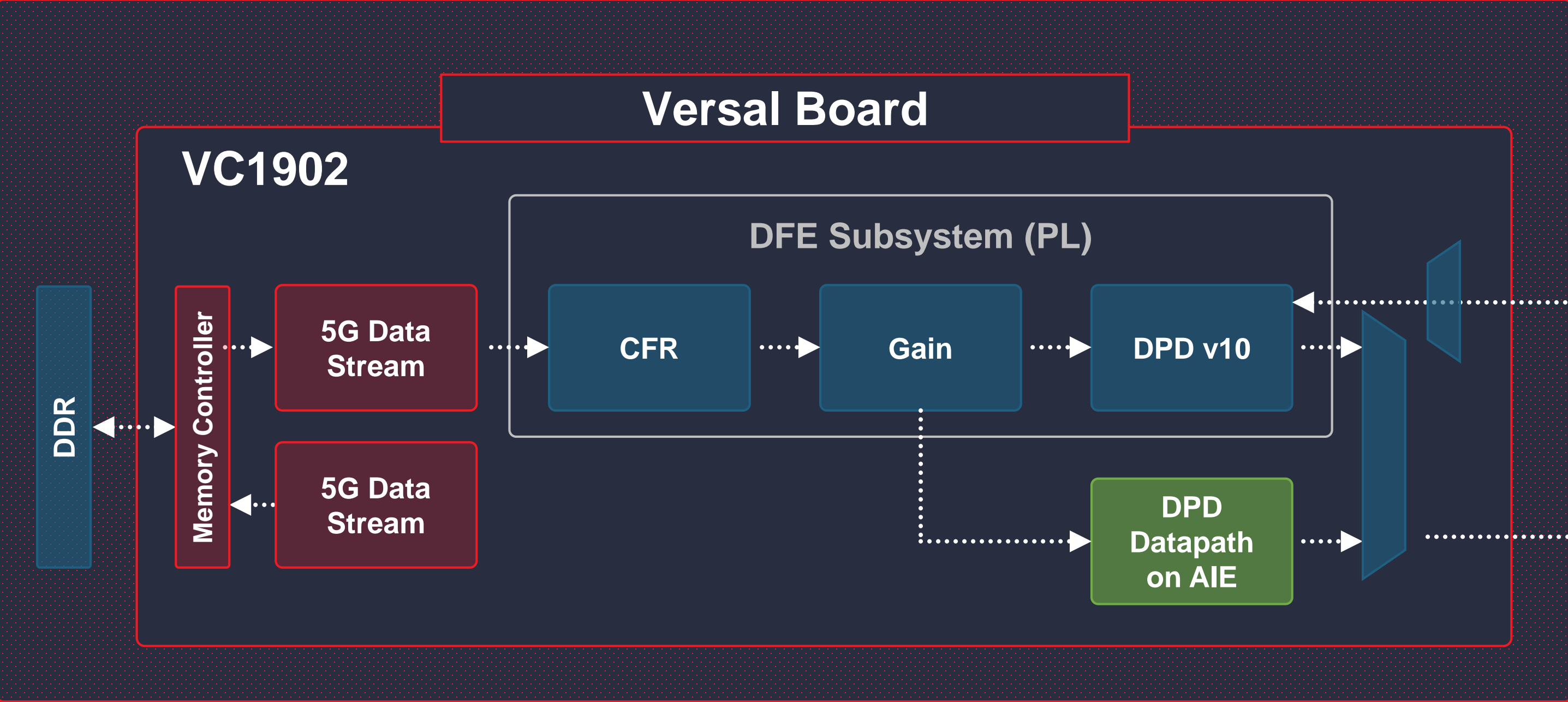
Distributed  
Unit



Central Unit



# Versal Compute Density



FPGA = 8T 8R\*  
ACAP = 16T 16R\*  
And 40% lower power

\* 200 MHz OBW



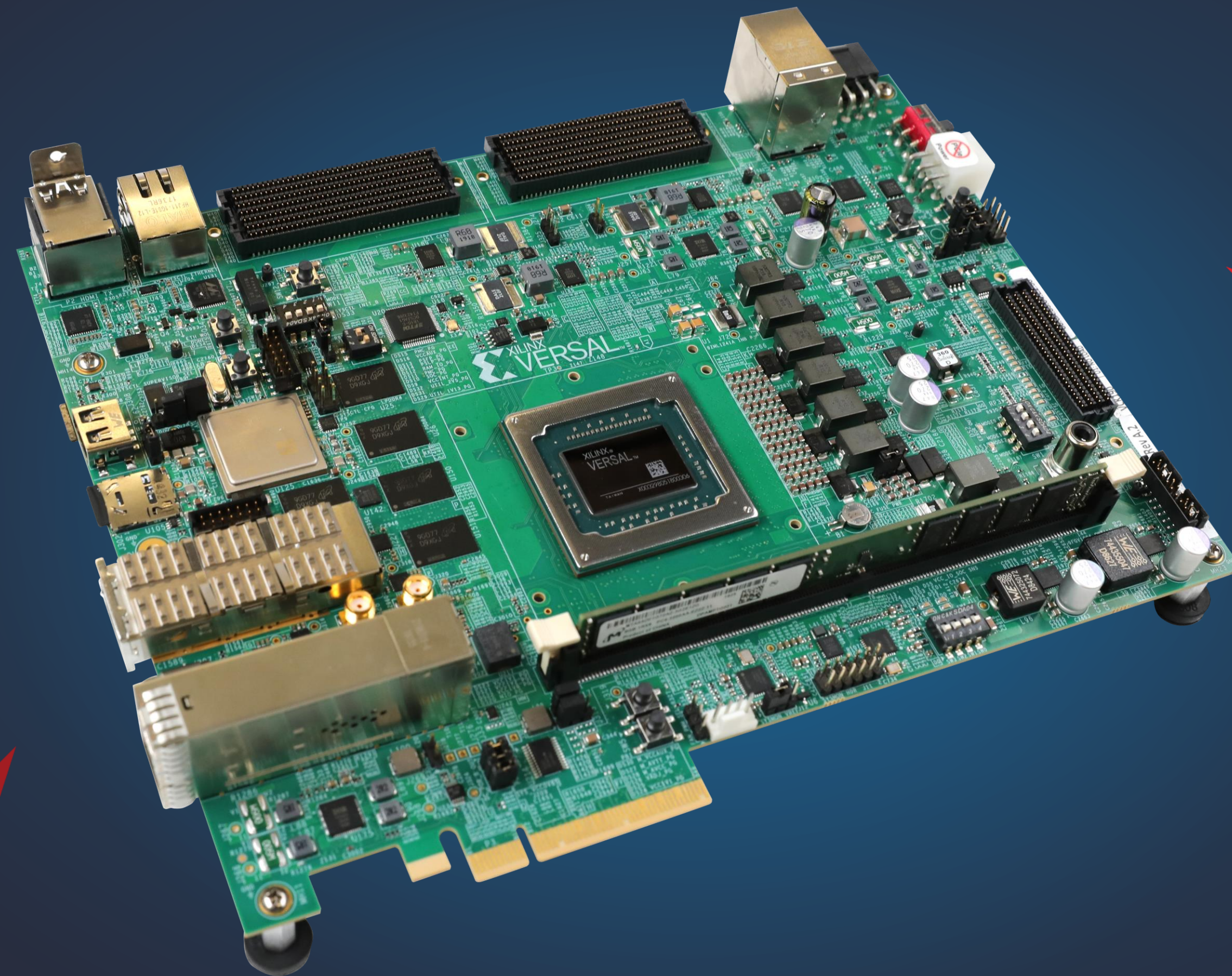


**KEYSIGHT**  
TECHNOLOGIES

**Nathan Jachimiec**

Keysight Labs

**Versal is Here...**



# Now It's Your Turn – XDF 2019



76

Hours of Technical Sessions

11

Labs

6

Tracks of Technical Sessions

69

Demos

18 Xilinx Demos, 39 Partners,  
12 Alveo Demos (Partners)

